

# RING OUZEL TERRITORIES AND FIRST-ARRIVAL DATE IN ROSEDALE 2023

Table 1: Status of territories in Rosedale in 2023

Territory	Confirmed		Probable		Possible		Remarks
	Early	Late	Early	Late	Early	Late	
East Mine	✓✓	✓					Area visited on: 22/3, 2/4, 7/4, 11/4, 14/4, 15/4, 17/4, 19/4, 20/4, 23/4, 26/4, 28/4, 29/4, 2/5, 4/5, 6/5, 7/5, 13/5, 23/5, 24/5, 28/5, 31/5, 1/6, 3/6, 5/6, 7/6, 10/6, 17/6, 21/6, 22/6, 26/6. Activity noted on: 2/4 m+f, 7/4 3m&2f, 11/4 m+f, 14/4 3RZs+1m passage, 15/4 4RZs+1m passage, 17/4 m+f, 19/4 1m, 20/4 1m sing. 1f, 23/4 1m sing., 26/4 1m&1f ringed + 1m sing., 28/4 1m sing.+1m, 29/4 1m sing.+1m, 2/5 1m sing., 4/5 2m sing. 1f, 6/5 1m sing.&1f, 7/5 2m 1f, 13/5 3m+2f, 23/5 1f 1m sing., 24/5 1m 1f, 1m sing., 1/6 1m sing. 1f, 3/6 1m sing., 1f, 5/6 1m, 7/6/2m, 1f, 10/6 1f, 17/6 1f, 21/6 1f, 26/6 nest empty. 19/4 pair seen copulating, 2/5 nest found in Gill beck, 6/5 f sitting, 13/5 nest empty, 23/5 m sing. is ringed, 1/6 f seen with beak full of moss, 3/6 nest under construction near derelicts, 5/6 m with food, 7/6 f seen on nest, 10/6 nest 4 warm eggs, 17/6 4 eggs f sitting, 21/6 3 warm eggs & 1 brocken, 22/6 2 newly hatched & 1 hatching, 26/6 nest found predated.
Sturdy Bank	✓						Area visited on: 22/3, 25/3, 2/4, 7/4, 11/4, 17/4, 2/5, 4/5, 7/5, 13/5, 23/5, 28/5, 3/6, 7/6, 17/6, 17/6. Activity noted on: 25/3 1m, 2/5 1f, 7/5 1m sing.&1f, 23/5 1m sing., 28/5 1m, 7/6 1f, 4/5 nest 4 eggs, 13/5 eggs cold likely deserted.
Nab Scar south			✓				Area visited on: 22/3, 2/4, 7/4, 11/4, 17/4, 2/5, 3/5, 4/5, 7/5, 13/5, 23/5, 3/6, 7/6, 17/6, 21/6. Activity noted on: 7/4, 2/5 1m sing., 4/5 1m 1f, 21/6 1f, 4/5 f prospecting for nest.
Nab Scar north	✓						Area visited on: 22/3, 2/4, 7/4, 11/4, 17/4, 2/5, 3/5, 4/5, 7/5, 13/5, 23/5, 24/5, 3/6, 7/6, 17/6, 22/6. Activity noted on: 7/4 m+f 1m, 11/4 1m sing., 17/4 1m sing. 1f, 2/5 1m sing., 4/5 1m sing., 13/5 1m sing. 1f, 23/5 1m sing. 1f, 24/5 1m 1f, 3/6 1f 1m, 7/6 4 pulli, 17/6 1f, 22/6 1m, 24/5 nest 4 eggs, 3/6 f & m with food 4 pulli 2 days. 7/6 4 pulli ringed. 17/6 nest empty, fledged Successfully.
Reeking Gill south							Area visited on: 22/3, 2/4, 7/4, 11/4, 2/5, 23/5, 24/5, 17/6. Activity noted on: 2/5 m ringed,
Reeking Gill quarry							Area visited on: 22/3, 2/4, 7/4, 11/4, 3/5, 23/5, 24/5, 17/6. Activity noted on: Undated: Jimmy B reported RZ in quarry area.
Reeking Gill	✓						Area visited on: 22/3, 2/4, 7/4, 11/4, 3/5, 4/5, 23/5, 24/5, 27/5, 31/5, 7/6, 17/6, 21/6. Activity noted on: 3/5 1m, 23/5 1f, 24/5 1m 1f, 27/5 1m 1f, 3/5 m likely holding terr. 24/5 f is ringed, nest 3 pulli ringed @ 7days. 27/5 adults feeding pulli. 31/5 nest empty.
Reeking Gill cutting	✓						Area visited on: 22/3, 2/4, 7/4, 11/4, 3/5, 27/5, 31/5, 3/6, 7/6, 10/6, 17/6, 21/6. Activity noted on: 27/5 1m 1f, 31/5 1f, 3/6 1m, 7/6 1m 1f 2fled., 27/5 nest 2 pulli 4/5 days. 31/5 2 pulli ringed. 7/6 2 fledglings seen being fed by f & m.
Dalehead quarry area							Area visited on: 22/3, 2/4, 7/4, 11/4, 3/5. Activity noted on:
Dalehead east							Area visited on: 22/3, 2/4, 7/4, 11/4, 3/5, 7/6, 21/6. Activity noted on:
Dalehead		✓					Area visited on: 22/3, 2/4, 7/4, 11/4, 3/5, 2/6, 7/6, 21/6, 26/6. Activity noted on: 2/6 RZ?, 7/6 1m, 12/6 1m sing., 26/6 1m sing. 1f, 2/6 Unconfirmed sighting in gill above embankment. 7/6 m seen in same area as 2/6. 21/6 m seen in gill singing. Possible 2 <sup>nd</sup> male singing but unseen. 26/6 pair seen in gill.
Dalehead west					✓		Area visited on: 22/3, 3/5, 2/6, 7/6, 26/6. Activity noted on: 7/4 1m sing., 7/4 m heard singing at DH west from DH quarry.
Blakey Lion area					✓		Area visited on: 22/3, 11/4, 3/5, 31/5, 2/6, 7/6, 26/6. Activity noted on: 11/4 RZ (m/f)?, 31/5 1f, Undated: Jimmy B reported RZ in area below Lion. 31/5 f seen between north path & pond.
MattyCarr quarry area			✓				Area visited on: 29/3, 19/4, 17/5, 2/6 Activity noted on: 17/5 1m sing. & 1f, 17/5 f in quarry & unseen m singing at south end of quarry.
MattyCarr south							Area visited on: 29/3, 19/4, 17/5, 2/6 Activity noted on:
Sledge Shoe			✓				Area visited on: 29/3, 19/4, 17/5, 2/6 Activity noted on: 29/3 1m, 17/5 m sing., 17/5 m seen on top of ruin sing. & preening.
Round Hill west							Area visited on: 29/3, 19/4, 17/5, 2/6 Activity noted on:
Round Hill east							Area visited on: 29/3, 19/4, 17/5, 2/6 Activity noted on:
Round Hill south							Area visited on: 29/3, 19/4, 17/5, 2/6 Activity noted on:
Sheriff's Pit north							Area visited on: 29/3, 19/4, 17/5, Activity noted on:
Sheriff's Pit			✓				Area visited on: 29/3, 19/4, 17/5, 14/6. Activity noted on: 29/3 1m, 19/4 1m 1f, 17/5, m sing., 29/3 m in shaft. 19/4 m & f around shaft. 17/5 m sing. unseen back of shaft.
Sheriff's Pit south							Area visited on: 14/6, Activity noted on:
Thorgill head							Area visited on: 14/6, Activity noted on:
Thorgill west							Area visited on: 5/4, 26/4, 10/5, 24/5, Activity noted on:
Thorgill quarry area							Area visited on: 5/4, 26/4, 10/5, 24/5, Activity noted on: 26/4 1m,
Hob Crag quarry area	✓						Area visited on: 5/4, 19/4, 26/4, 10/5, 17/5, 24/5, 14/6. Activity noted on: 19/4 1m, 26/4, 1m+1f, 10/5 1m&1f, 17/5 1f, 24/5 sing., 26/4 nest 4eggs. 10/5 2 pulli seen a few days old. 17/5 4 pulli est. 12 days, f feeding.
Bank Top area	✓						Area visited on: 5/4, 26/4, 10/5, 17/5, 24/5, 31/5, 2/6, 14/6, Activity noted on: 5/4 1m sing., 19/4 1m, 26/4 5RZs inc.1m+1f, 10/5 1f, 17/5 1f, 24/5 1m 1f, 31/5 1m 1f, 26/4 likely 3 passage birds & resident pair. 10/5 nest 4 eggs f sitting. 17/5 nest 4 eggs f sitting. 24/5 2 pulli seen through bins moving. 31/5 nest 3 pulli, 2/6 3 pulli about to fledge.
Spindle Thorn area					✓		Area visited on: 10/5, 24/5, 31/5, 14/6, Activity noted on: 10/5 text Anthony who reported sightings of RZ in tree on east side. 31/5 text Anthony who reported seeing ouzel at ST 'fairly regular' flying towards PW. Sits in tree either side of road.
Pen Wash							Area visited on: 26/4, 31/5, Activity noted on: 10/5 Text Anthony who reported no sightings of RZ at PW.
<b>TOTAL</b>	<b>8</b>	<b>2</b>	<b>4</b>	<b>0</b>	<b>3</b>		

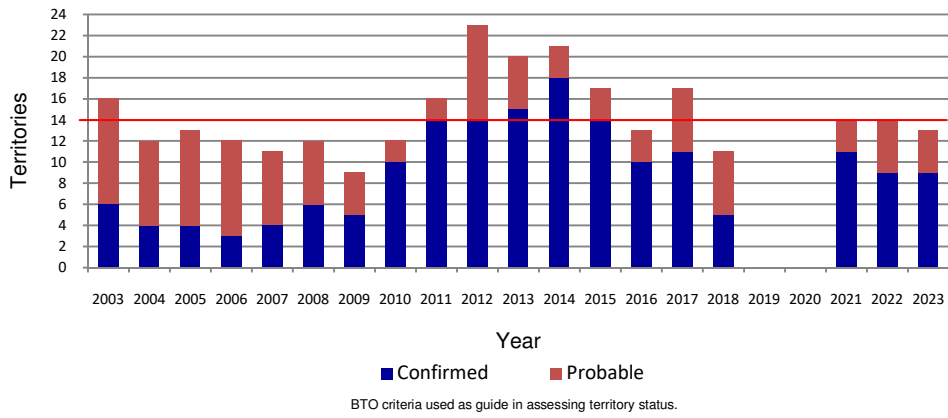


Fig. 1 Confirmed and Probable territories recorded in the Rosedale area of the North York Moors from 2003 to 2023 – long-term average shown by red line (data not available for 2019 and 2020)

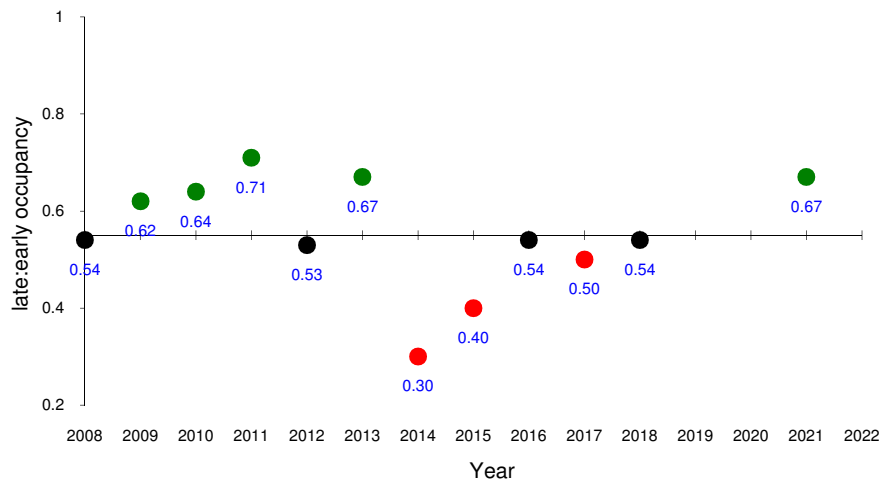


Fig. 2 Annual ratio of late to early territory occupancy for the Rosedale area of the North York Moors from 2008 to 2022 relative to 12-year mean of 0.55 (data not available for 2019, 2020 & insufficient for 2022)

Markers coloured green, black and red show values that are above, near or below the 12-year mean, respectively.

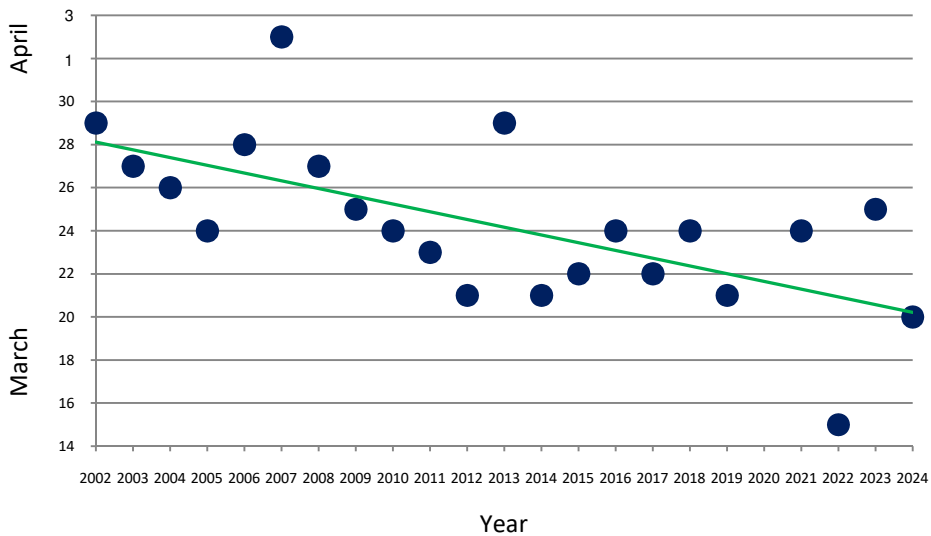


Fig. 3 First-arrival date and 22-year trend for the Rosedale area of the North York Moor from 2002 to 2024 (data not available for 2020)